



 **ORPAZ**

2025 - 2026

Available at

israeldefensestore.com

 **IDS** ISRAEL
DEFENSE
STORE



ORPAZ T-SERIES

T40 Pro Holster

Magnetic Retention Tactical Dual-Action

The Orpaz T40 Pro Holster delivers unmatched security and versatility for tactical professionals. Featuring Level III retention and a Standard or Magnetic Optic Guard, it offers fast, reliable access while ensuring ultimate firearm safety. Built from rugged polymer, the T40 Pro fits most tactical lights and optics. Its modular design works seamlessly with all Orpaz attachments, allowing customizable carry options. The T40 Pro is the ideal solution for high-stress scenarios where security and performance are critical.

Level III Security

Provides advanced Level III security with magnetic retention and a dual-action release that drops the Hood Guard for secure, quick access.

Optic Guard Options

Choose the Standard Optic Guard for automatic coverage or the Magnetic version for manual, secure control with added flexibility.

Intuitive Dual-Action Release

The thumb release offers dual-action control, automatically releasing the Hood Guard and optic guard, or adjustable for single-action simplicity.

Adjustable for Various Flashlights

The fully adjustable design ensures compatibility with a wide range of tactical pistol lights, allowing for personalized setups.

FEATURES

- 1 Dual-Action Thumb Release**
The ergonomic thumb release lever ensures a smooth, two-step draw action. Pushing the button simultaneously releases the firearm and opens the Optic Guard for seamless access.
- 2 Optic Guard Protection**
Protects your pistol's optics and sights during holstering, ensuring maximum safety and preventing unwanted damage.
- 3 Magnetic Retention**
A powerful magnetic retention system automatically locks your firearm in place, providing added security and peace of mind.
- 4 Adjustable Flashlight Fit**
Customizable to fit most medium-to-large tactical flashlights, guaranteeing a secure and reliable fit for your light-bearing pistols.
- 5 Multi-Pistol Compatibility**
Adjustable bottom panel and muzzle support allow the holster to accommodate various pistol models, ensuring a precise fit for different setups.
- 6 Orpaz Attachment Compatibility**
Compatible with all Orpaz attachments, offering multiple carry options for your tactical or everyday needs.



Video



AVAILABLE FOR
LEFT-HANDED SHOOTERS



T40 PRO



T40 PRO
MAGNET



T40X PRO



T40X PRO
MAGNET



PISTOL MODEL COMPATIBILITY

FLASHLIGHTS COMPATABILITY

MANUFACTURER	MODELS
Glock	17, 19, 21, 22, 23, 29, 30, 31, 34, 37, 43X, 45
Smith & Wesson	M&P 2.0, M&P 9mm, SD9VE, SD40VE
Springfield	Most XD models
CZ	P-01, P-10, 75
Sig Sauer	P226, P228, P229, P250, P320, SP2022
H&K	VP9, VP40, P30, USP
Ruger	SR9, SR40, Security 9, Ruger-5.7
Walther	PDP, PPQ
Taurus	G3, TaurusTX 22
Other	Fits handguns with slides up to 1.125" wide and 6.2"-7.5" long

MEDIUM T40	LARGE T40
STREAMLIGHT - TLR-3, TLR-6, TLR-7, TLR-7A, and TLR-8	STREAMLIGHT-TLR-1, TLR-1 HL, TLR-2, TLR-2HL, and TLR-VIR
OLIGHT - Baldr Mini, Baldr S, PL-MINI 2 Valkyrie and PL-MINI 3 Valkyrie	OLIGHT - BaldrPro, PL-2RL Baldr, PL-2 Valkyrie, and PL-Pro Valkyrie
SUREFIRE - XC1, and XC2	SUREFIRE-X300, and X400.
SIG - FOXTROT	
INFORCE - APLc	
CRIMSON TRACE - CMR-209	
NIGHTSTICK - TCM-550XL	
TRUSTFIRE - GM21, and GM23	

ORPAZ T-SERIES



T40 Holster

Magnetic Retention

Tactical

Thumb Release Mechanism

The Orpaz T40 Holster combines durability, security, and versatility for tactical professionals. Featuring Level II retention with an ergonomic thumb-release mechanism, it ensures quick, natural access to your firearm while keeping it secure. Designed to fit most pistols with tactical lights, the T40 is fully adjustable for retention and rotation. Compatible with all Orpaz attachments, this rugged polymer holster is ideal for law enforcement, military, and everyday carry needs.

Level II Retention

Secure your firearm with an intuitive thumb-release mechanism for quick and smooth draws.

Light-Bearing Design

Compatible with most tactical lights for enhanced versatility and operational readiness.

Adjustable Retention

Customize the fit with adjustable retention screws for personalized security and access.

Modular Compatibility

Works seamlessly with all Orpaz attachments, including paddle, belt loop, MOLLE, and drop-leg systems.

Durable Construction

Made from high-quality polymer for lightweight, rugged performance in demanding conditions.

FEATURES

- 1 Thumb Release Mechanism**
The intuitive thumb release ensures a smooth, natural draw while keeping your firearm securely in place.
- 2 Magnetic Retention**
A powerful magnetic retention system automatically locks your firearm in place, providing added security and peace of mind.
- 3 Optic-Ready Design**
Compatible with pistols featuring optics and sights, providing maximum versatility without compromising fit.
- 4 Adjustable Flashlight Fit**
Customizable to fit most medium-to-large tactical flashlights, guaranteeing a secure and reliable fit for your light-bearing pistols.
- 5 Multi-Pistol Compatibility**
Adjustable bottom panel and muzzle support allow the holster to accommodate various pistol models, ensuring a precise fit for different setups.
- 6 Orpaz Attachment Compatibility**
Compatible with all Orpaz attachments, offering multiple carry options for your tactical or everyday needs.



Used by Israel Defense Forces (IDF)



Used by Israel Police

Video



AVAILABLE FOR
LEFT-HANDED SHOOTERS



T40



T40X



PISTOL MODEL COMPATIBILITY

FLASHLIGHTS COMPATABILITY

MANUFACTURER	MODELS
Glock	17, 19, 21, 22, 23, 29, 30, 31, 34, 37, 43X, 45
Smith & Wesson	M&P 2.0, M&P 9mm, SD9VE, SD40VE
Springfield	Most XD models
CZ	P-01, P-10, 75
Sig Sauer	P226, P228, P229, P250, P320, SP2022
H&K	VP9, VP40, P30, USP
Ruger	SR9, SR40, Security 9, Ruger-5.7
Walther	PDP, PPQ
Taurus	G3, TaurusTX 22
Other	Fits handguns with slides up to 1.125" wide and 6.2"-7.5" long

MEDIUM T40	LARGE T40
STREAMLIGHT - TLR-3, TLR-6, TLR-7, TLR-7A, and TLR-8	STREAMLIGHT-TLR-1, TLR-1 HL, TLR-2, TLR-2HL, and TLR-VIR
OLIGHT - Baldr Mini, Baldr S, PL-MINI 2 Valkyrie and PL-MINI 3 Valkyrie	OLIGHT - BaldrPro, PL-2RL Baldr, PL-2 Valkyrie, and PL-Pro Valkyrie
SUREFIRE - XC1, and XC2	SUREFIRE-X300, and X400.
SIG - FOXTROT	
INFORCE - APLc	
CRIMSON TRACE - CMR-209	
NIGHTSTICK - TCM-550XL	
TRUSTFIRE - GM21, and GM23	



Video



T41 Universal Holster

Universal Fit | Level I Retention | Optic-Compatible

The T41 Holster is our universal Sights and Optics Compatible Holster. With its innovative design, you can easily adjust your holster's height and width to fit different pistols and optics. Featuring a thumb lock release mechanism and compatibility with all Orpaz attachments so you can mount it anywhere you want.

MANUFACTURER

MODELS

MANUFACTURER	MODELS
Glock	17, 19, 21, 22, 23, 29, 30, 31, 34, 37, 45
Smith & Wesson	M&P 2.0, M&P 9mm, SD9VE, SD40VE
Springfield	Most XD models
CZ	P-01, P-10, 75
Sig Sauer	P226, P228, P229, P250, P3320, SP2022
H&K	VP9, VP40, P30, USP
Ruger	SR9, SR40, Security 9, Ruger-5.7
Walther	PDP, PPQ
Taurus	G2, G3, TaurusTX 22
Other	Contact us

T41 LV1

Universal Fit | Level II Retention | Optic-Compatible

FEATURES

- 1** Thumb Release Mechanism
The intuitive thumb release ensures a smooth, natural draw while keeping your firearm securely in place.
- 2** Adjustable Width
Allows precise lateral adjustment to fit different weapon frames or accessory configurations, ensuring maximum stability and comfort.
- 3** Adjustable Height
Provides vertical fine-tuning for optimal draw angle and sight alignment, adapting easily to



Used by Israel Defense Forces (IDF)

T41 LV2

Universal Fit | Level II Retention | Optic-Compatible

FEATURES

- 1** **Thumb Release Mechanism**
The intuitive thumb release ensures a smooth, natural draw while keeping your firearm securely in place.
- 2** **Adjustable Width**
Allows precise lateral adjustment to fit different weapon frames or accessory configurations, ensuring maximum stability and comfort.
- 3** **Adjustable Height**
Provides vertical fine-tuning for optimal draw angle and sight alignment, adapting easily to Magnetic Retention
- 4** **A powerful magnetic retention system** automatically locks your firearm in place, providing added security and peace of mind.



MANUFACTURER	MODELS
Glock	17, 19, 21, 22, 23, 29, 30, 31, 34, 37, 45
Smith & Wesson	M&P 2.0, M&P 9mm, SD9VE, SD40VE
Springfield	Most XD models
CZ	P-01, P-10, 75
Sig Sauer	P226, P228, P229, P250, P3320, SP2022
H&K	VP9, VP40, P30, USP
Ruger	SR9, SR40, Security 9, Ruger-5.7
Walther	PDP, PPQ
Taurus	G2, G3, TaurusTX 22
Other	Contact us

T41 LV3 PRO

Universal Fit | Level III Retention | Optic-Compatible

FEATURES

- 1** Thumb Release Mechanism
The intuitive thumb release ensures a smooth, natural draw while keeping your firearm securely in place.
- 2** Adjustable Width
Allows precise lateral adjustment to fit different weapon frames or accessory configurations, ensuring maximum stability and comfort.
- 3** Adjustable Height
Provides vertical fine-tuning for optimal draw angle and sight alignment, adapting easily to Magnetic Retention
- 4** A powerful magnetic retention system automatically locks your firearm in place, providing added security and peace of mind.
Optic-Ready Design
- 5** Compatible with pistols featuring optics and sights, providing maximum versatility without compromising fit.



MANUFACTURER

MODELS

MANUFACTURER	MODELS
Glock	17, 19, 21, 22, 23, 29, 30, 31, 34, 37, 45
Smith & Wesson	M&P 2.0, M&P 9mm, SD9VE, SD40VE
Springfield	Most XD models
CZ	P-01, P-10, 75
Sig Sauer	P226, P228, P229, P250, P3320, SP2022
H&K	VP9, VP40, P30, USP
Ruger	SR9, SR40, Security 9, Ruger-5.7
Walther	PDP, PPQ
Taurus	G2, G3, TaurusTX 22
Other	Contact us

New

ALT4 Pistol + Magazine Combo

Optic-Compatible Appendix Concealed Carry

The ALT4 Sidecar Combo adds a dedicated mag holster, creating a contoured appendix setup that distributes weight evenly and improves concealment. The mag carrier matches the pistol platform and includes full retention adjustment for a secure, ready-to-deploy defensive system.

- 1** Sidecar Configuration
Connects the mag carrier with a rubber flex hinge that allows natural contour and movement.
- 2** Platform Matching
The magazine holster is sized specifically to match the pistol platform and magazine type.
- 3** Stability & Comfort
Shifts clip placement to distribute weight evenly for a more stable appendix carry.
- 4** Adjustability
Provides retention adjustment on both pistol and magazine while remaining fully modular.



New

ALT4 Appendix & Classic IWB

Optic-Compatible Appendix Concealed Carry

The ALT4 is a slim, optic-ready concealed-carry system developed for an Israeli undercover unit, offering both appendix and classic IWB configurations in one modular platform. With a breathable cushion backing, adjustable retention, and multiple clip setups, it delivers professional-grade discretion and comfort for everyday carry.

- 1** Carry Modes
Supports both a dual-clip appendix setup and a classic single-1.5" clip IWB configuration in one system.
- 2** Concealment & Fit
Uses a Mod Wing and removable cushion backing to improve grip tuck and reduce printing.
- 3** Compatibility
Built with an optic-ready low-profile shell that supports red dots and suppressor-height sights.
- 4** Comfort & Adjustability
Features a clip mounted on a pivoting hinge, along with fully adjustable passive retention for a tailored draw feel.



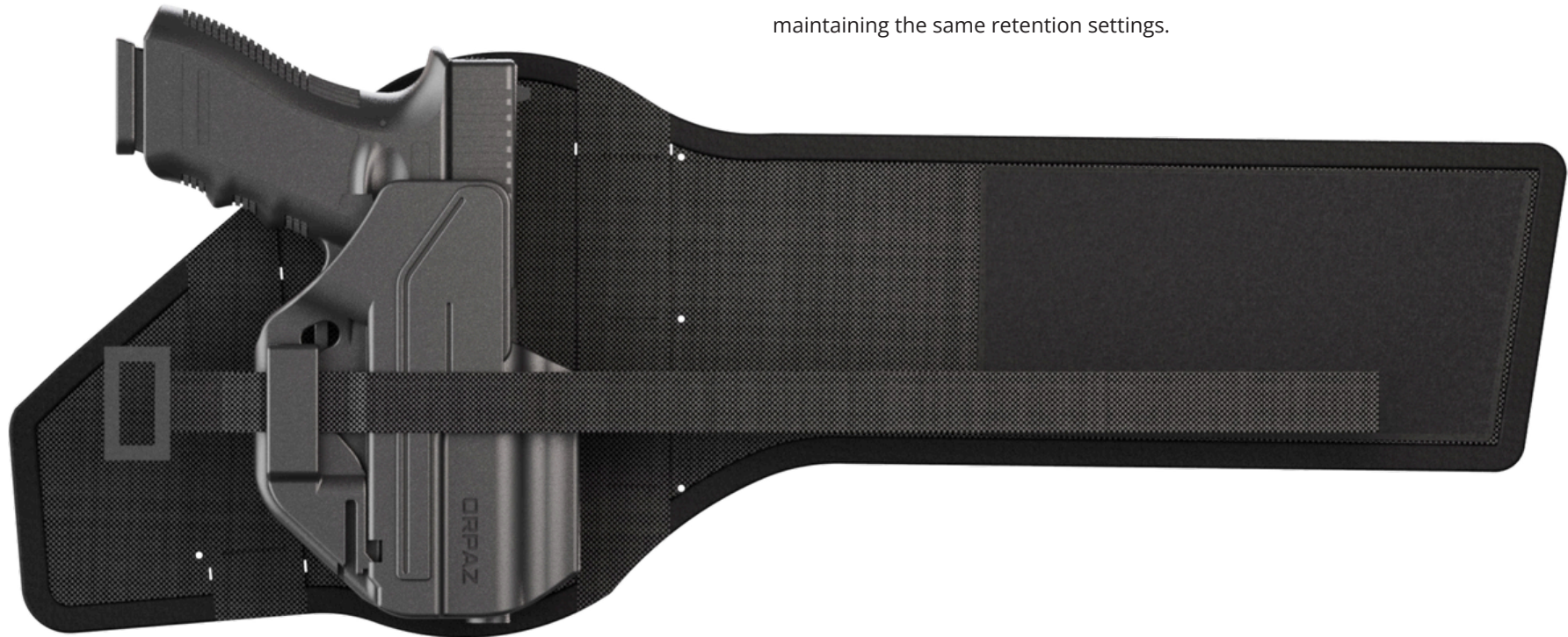
New

ALT4 Ankle Carry Platform

Optic-Compatible | Breathable Padding | Undercover Carry

The ALT4 Ankle Platform converts the ALT4 pistol shell into a true deep-concealment ankle holster, ideal for undercover use or backup carry. Its padded, breathable, anti-slip design keeps the holster secure and comfortable while allowing seamless switching from waist to ankle carry.

- 1** Deep Concealment
Enables true ankle carry using the same ALT4 shell without compromising concealment.
- 2** Comfort & Stability
Built with padded, breathable, anti-slip materials that keep the holster secure during movement.
- 3** Fit & Versatility
Designed as a one-size-fits-most adjustable platform for a wide range of users.
- 4** Quick Conversion
Allows fast transfer from waistband to ankle while maintaining the same retention settings.



ALT4 FAMILY

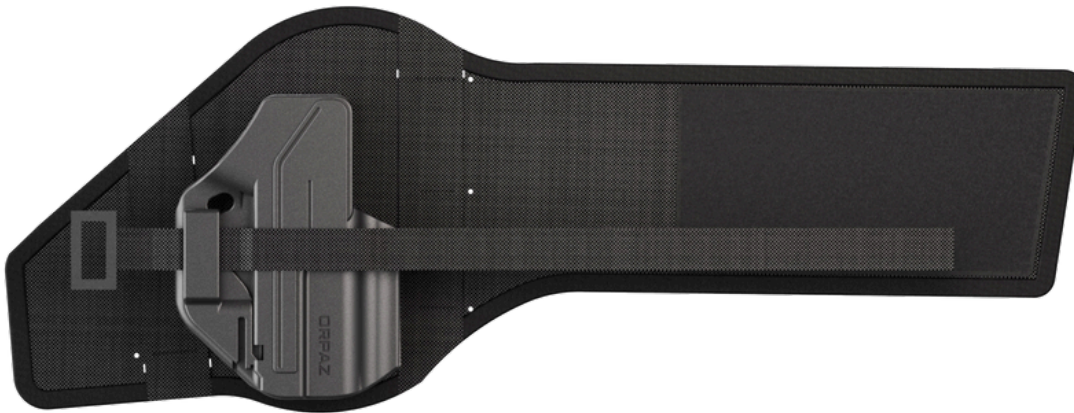
ALT4 Appendix & Classic IWB



ALT4 Pistol + Magazine Combo



ALT4 Ankle Carry Platform



ALT4 Standard IWB



AVAILABLE FOR
LEFT-HANDED SHOOTERS



Evo Holster Active / Passive

Active Retention IWB Holster

Concealed Carry | Ambidextrous | Modular System

The EVO Holster by ORPAZ is a slim, lightweight, and versatile holster offering unmatched security. Available in thumb-activated or passive retention, it ensures 100% pistol retention with a customizable carry experience. Ambidextrous design with adjustable belt clip height suits any preference, while a trigger safety window provides visual confirmation of your firearm's status. Made from durable polymer, it offers comfort and adaptability, easily converting from IWB to OWB with optional attachments. Paired with the modular "Evo Pro KIT," the EVO Holster delivers a tailored solution for concealed carry enthusiasts.

MANUFACTURER	FITS	SKU.	
		PASSIVE	ACTIVE
Glock	19, 17, 22, 23, 30, 37, 30s, 31, 45, 34	M19	M19T
	43, 43x, 48	M43	M43T
Sig Sauer	P365, P365X, P365XL	M365	M365T
	P365 XMACRO	MX3L1	M3XMT
S&W	M&P Sheild	MPS9	MPS9T
IWI	Masada	MSD9	MSD9T
	Masada Slim	MSD9S	MPS9T
Springfield	Hellcat Pro	M37	M37T
	Hellcat	M43	M43T

Video



Used by Israel Defense Forces (IDF)



Used by Israel Police

EVO HOLSTER



Two types of Belt Clips

OWB Attachments

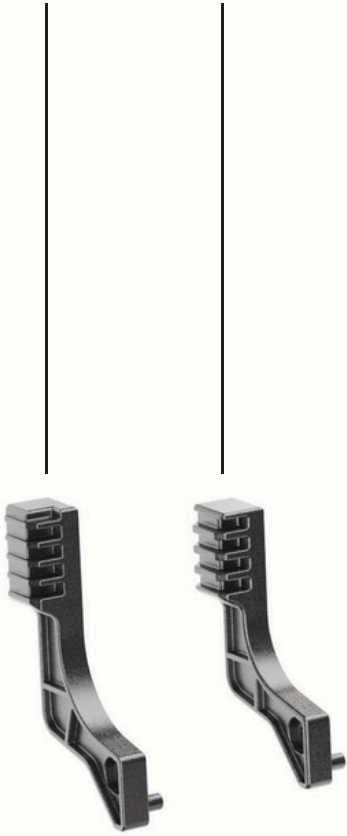
Thumb-release system

Trigger visual confirmation window



Evo Holster Accessories

ModWing (IWB Claw)



Pusher Surface



Classic IWB Belt Clip



J-Clip



OWB Converter Ext.



Belt Loop OWB

Paddle OWB Attachment



Belt Loop OWB



Sweat guard Ext.





Belt Loop OWB

Transforms the carrying position into OWB.

It fits onto any belt up to 1.75 inches.



Paddle OWB Attachment

Transforms the carrying position into OWB. It is slightly curved, keeps footprint to a minimum, and has a firm grip on the belt.



Sweat guard Ext.

A hardware piece that attaches to the holster, acts as a barrier between your firearm and your body.



ModWing (IWB Claw)

An IWB Hardware piece that rotates the holster towards your body, resulting in better concealment and reduced printing. It can be installed and removed easily. Fits right-handed shooters only.



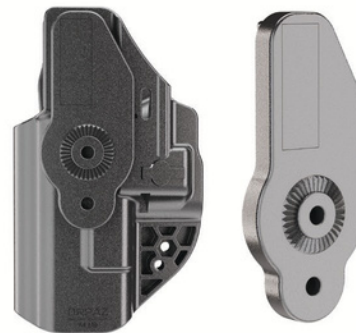
Classic IWB Belt Clip

Easy on, easy off. Simply push the clip past the belt to hook it on. Fits up to 1.75-inch belts.



J-Clip

An "Under the belt" Clip - inserts underneath the belt, preventing the holster from being drawn out with the gun. Fits 1.75 inch belts.



OWB Converter Ext.

The Orpaz attachments can be securely attached to the holster with a hardware piece that acts as a mounting point.



Pusher Surface Ext.

A hardware piece that connects to the pusher and increases its surface area for easier pushing.

AVAILABLE FOR
LEFT-HANDED SHOOTERS



Evo Light Bearing

IWBModularLightBearing Holster

Concealed Carry

Ambidextrous

Modular Flashlight Adapter System

The Orpaz Evo Light Holster offers unmatched versatility and precision fit for light-bearing pistols. Built for specific pistol models, it ensures a snug, secure hold without the need for active retention mechanisms. Thanks to the revolutionary MFA (Modular Flashlight Adapter) system, this holster accommodates popular tactical lights such as the Streamlight TLR-7, TLR-8, Olight PL-Mini, and Inforce WILD1, while including a demo adapter for pistols without a flashlight. Ambidextrous, adjustable, and modular, the Evo Light Holster is perfect for IWB and OWB carry, delivering comfort, reliability, and flexibility.

MFA Modular Light System

Includes adapters for TLR-7, TLR-8, PL-Mini, WILD1, and a demo adapter for pistols without lights.

Perfect Pistol-Specific Fit

Designed for a tight, secure fit with no need for additional retention mechanisms.

IWB and OWB Carry Options

Includes a height-adjustable belt clip; compatible with Evo OWB Paddle and Belt Loop attachments.

Ambidextrous and Adjustable

Easily switches between right and left-hand configurations for personalized carry.

Durable Polymer Construction

Made from high-quality, impact-resistant polymer for all-day reliability and comfort.

MANUFACTURER	FITS	SKU
Glock	19, 17, 22, 23, 30, 37, 30s, 31, 45, 34	M19LIGHT
Glock	43X	M43LIGHT

MFA System

Modular Flashlight Adapter System



TLR-7



Demo
(without flashlight)



TLR-8



Olight PL Mini



Inforce-S



Ambidextrous



Two types of Belt Clips



OWB Attachments



MFA - Modular Flashlight Adapter





Evo X
Light Bearing

Evo X Holster

Magnetic Retention

MFA Adapter System

The Orpaz EvoX Holster sets a new standard for slim, secure, and adaptable carry of light-bearing pistols. Engineered with advanced injection-molded polymer, the EvoX is exceptionally thin yet robust, providing comfortable all-day inside-the-waistband concealment. The innovative MFA (Modular Flashlight Adapter) system ensures a perfect fit for your specific weapon light—simply swap adapters when switching lights. Powerful magnetic retention at the muzzle keeps your firearm secure and enables a fast, smooth, and silent draw, while the optics-ready design accommodates most red dot sights and tall suppressor sights with ease.

FEATURES

- 1** Magnetic Retention System
Powerful integrated magnet at the muzzle secures your pistol with positive retention, ensuring fast, silent, and intuitive draws every time.
- 2** MFA Modular Flashlight Adapter System
Includes multiple adapters for precise fitment with popular medium and large weapon lights. Effortlessly swap adapters as you change lights no need to buy a new holster.
- 3** Optics & Suppressor Sight Ready
Deep rear cutout and high sight channel allow use with most red dot optics and tall front or suppressor sights.
Ambidextrous & Modular
- 4** Instantly switch between right- and left-hand carry; adjustable belt clip height; compatible with OWB converter and all Orpaz attachments for total carry flexibility.
- 5** Slim, Durable Injection-Molded Construction
Ultra-thin, contoured design for discreet comfort, crafted in Israel from high-strength polymer and backed by the Orpaz warranty.



Video



Evo X



Evo XL



	Spacer	Manufacture	Light
EvoX EXMED MFA	TLR8	STREAMLIGHT	TLR-3, TLR-6, TLR-8A, TLR-8 SUB
		OLIGHT	BALDR S, PL MINI VALKYRIE, RL MINI, BALDR MINI, PL MINI 3 VALKYRIE
		SUREFIRE	XC1
	TLR7	STRAMLIGHT	TLR-7, TLR-7 X SUB
		INFORCE	WILD1
	None	NITECORE	NPL25 GL
EvoXL EXLRG MRFA	EX300	SUREFIRE	X300, X300 ULTRA
		OLIGHT	BALDR PRO R
		NIGHTSTICK	TWM 850XL
	EX400	SUREFIRE	X400, X400 ULTRA
		FENIX	GL22
		STREAMLIGHT	TLR-3
	EX2	OLIGHT	BALDR PRO
	STREAMLIGHT	TLR2	

Magnetic Retention

Magnet Locks the Firearm – Smooth, Silent, Secure



MFA System

Modular Flashlight Adapter System



TLR-7



Demo
(without flashlight)



TLR-8

Adjustable Clip

CLIP SIZES

Fits Right or Left Handed Users

2"

1.75"

1.5"

1.75"



Customizable Ride Height





Ambidextrous Design

Fits Right or Left Handed Users

Attachments

Slim OWB Converter (Sold Separately)
Compatible with All Orpaz Attachments





*EVO
ANKLE*

EVO Ankle

The Orpaz EVO Ankle Holster brings together our ultra-slim EVO holster (available in both Active and Passive retention) and a purpose-built ankle attachment, offering unmatched comfort and security for concealed ankle carry. Choose the right holster for your pistol and retention style either thumb-release active retention for added security or passive retention for an easy, smooth draw. The EVO Ankle Holster features a soft, breathable, and non-slip interior to keep the holster firmly in place, while the secure dual-strap system ensures a stable, comfortable fit. Model-specific holsters ensure a perfect fit for your firearm, providing confidence with every step. The EVO Ankle Holster is the ultimate solution for deep concealment and everyday comfort.

- 1** Active or Passive Retention
Thumb-release button keeps your pistol fully secured. Spring-loaded detent delivers a firm hold with an audible click.
- 2** Custom Model-Specific Fit
Each EVO holster is precision-molded for your specific pistol model, ensuring perfect fit and trigger protection.
- 3** Stays Put, Moves With You
Lightweight, low-profile design for minimal printing and maximum concealment under pants.
- 4** Ultra-Slim Polymer Holster
Features dual locking prongs for secure, low-profile attachment, eliminating the need for standard MOLLE adapters while ensuring maximum stability in tactical environments.
- 5** Maximum Ankle Circumference
Fits up to 11.1" ankle circumference (measure before ordering).



AVAILABLE FOR
LEFT-HANDED SHOOTERS

DELTA Light-Bearing Holster

OWB | Level II Retention | MFA Modular Flashlight System

The Orpaz Delta is a rugged, Level II retention OWB holster designed for pistol-specific fit and optimal flashlight compatibility. Featuring the Orpaz MFA (Modular Flashlight Adapter) system, it allows seamless use with multiple popular pistol lights like the Streamlight TLR-7, TLR-8, and Olight PL-Mini. The ergonomic thumb release ensures smooth and secure access, while the optional Flashlight Protector Cap provides additional protection and light control. Built for durability and versatility, the Delta holster works with all Orpaz attachments, offering reliable performance for duty or tactical use.

Level II Retention System

Dual retention with an ergonomic thumb release for secure and quick firearm access.

Modular Flashlight Fit (MFA)

Compatible with multiple pistol lights, including Streamlight, Olight, and Inforce models.

Optional Flashlight Protector Cap

Adds extra protection and prevents light leaks during high-intensity activities.

Pistol-Specific Precision Fit

Designed to fit your exact pistol model securely without additional retention adjustments.

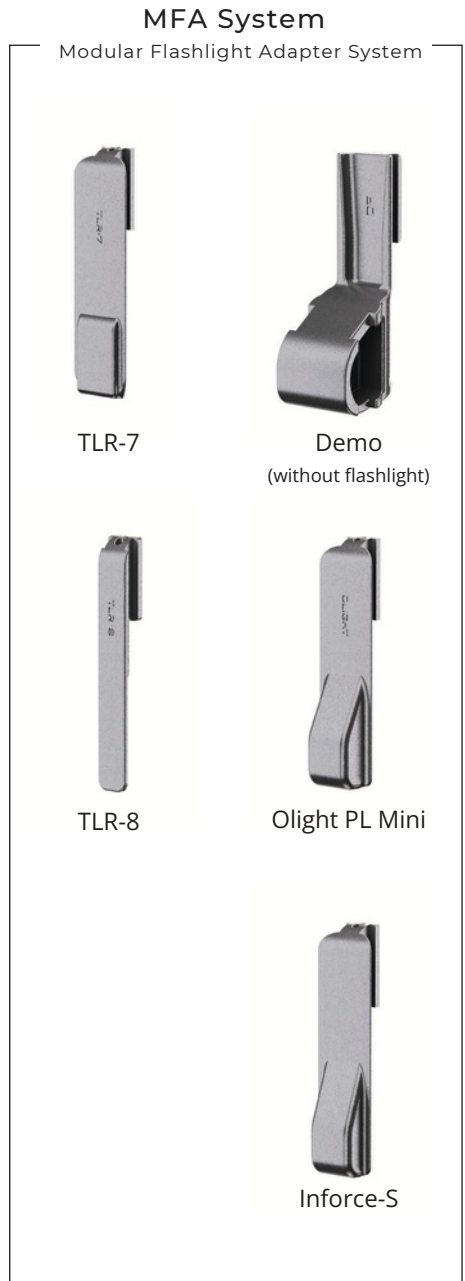
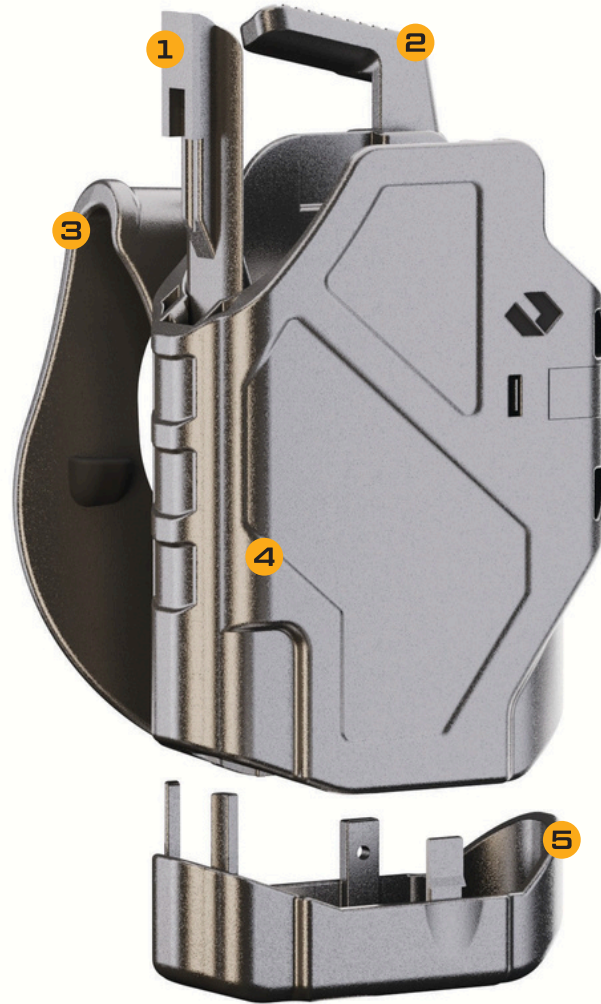
Works with All Orpaz Attachments

Compatible with drop-leg, low-ride, belt loops, and other modular Orpaz platforms.



FEATURES

- 1** Modular Flashlight Adapter (MFA)
Easily customize the fit for multiple pistol lights, ensuring perfect compatibility without needing a new holster.
- 2** Thumb Release Retention
Level II retention system locks into the pistol's ejection port. The ergonomic thumb release ensures smooth, secure, and intuitive firearm access.
Compatible with Orpaz Attachments
- 3** Seamlessly integrates with all Orpaz attachments, including drop-leg, low-ride, belt loops, and MOLLE attachments.
- 4** High-Quality Polymer Build
Precision-made for specific pistol makes and models, ensuring a perfect, secure fit with durable, impact-resistant polymer construction.
- 5** Flashlight Protector Cap
Optional cap provides added protection for your flashlight and prevents light from leaking through the holster.



MANUFACTURER	FITS	.SKU
Glock	17,19, 22,23,30,37,30s, 31, 45, 34	DLT19 /DLT19.LH



Used by Israel Defense Forces (IDF)



Used by Israel Police



*EZ Forward
Draw Holster*

Video



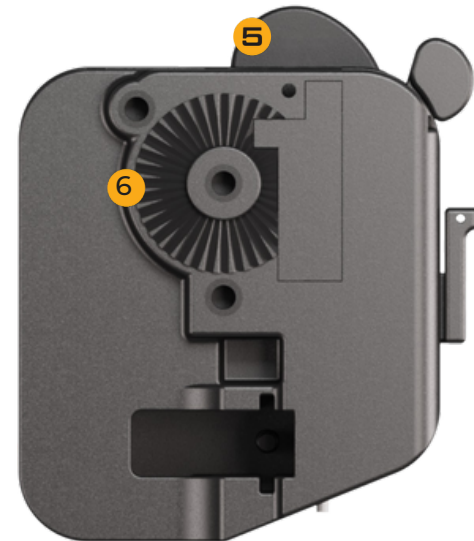
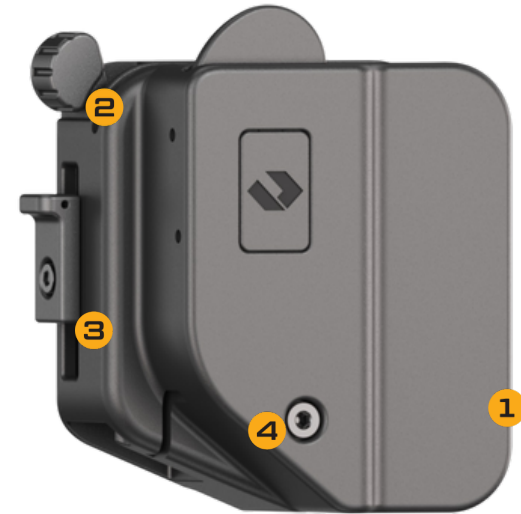
EZ Forward Draw Holster

Optic-Compatible Suppressor-Compatible Open-Front Design

The ORPAZ EZ Forward Draw Holster is revolutionizing firearm carry for suppressor users with its open-front design. Unlike traditional holsters, it allows seamless forward-up draw and holstering, eliminating the need for awkward hand movements or high lifts when using a suppressor. The Level II Retention System combines secure passive retention with a Rapid Finger Release Mechanism for intuitive, fast access. Modular, durable, and compatible with ORPAZ attachments, this holster is the ultimate solution for tactical and custom setups.

FEATURES

- 1** Forward Draw Design
Front-opening design allows quick and seamless holstering and drawing, even with suppressors or optics installed.
- 2** Intuitive Finger Release
The natural finger position activates the quick-release button, enabling smooth and fast access to your firearm.
- 3** Manual Locking System
Manually push the locking lever upward to securely re-lock the holster after holstering your firearm.
- 4** Adjustable Retention
Customize the retention level with an adjustable screw to match your preferred draw tension.
- 5** Flexible Trigger Wing
Spring-loaded wing protects the trigger while flexing during the draw, ensuring safety without interference.
- 6** Orpaz Attachment Compatibility
Compatible with all Orpaz attachments, offering versatile carry options for any mission or setup.

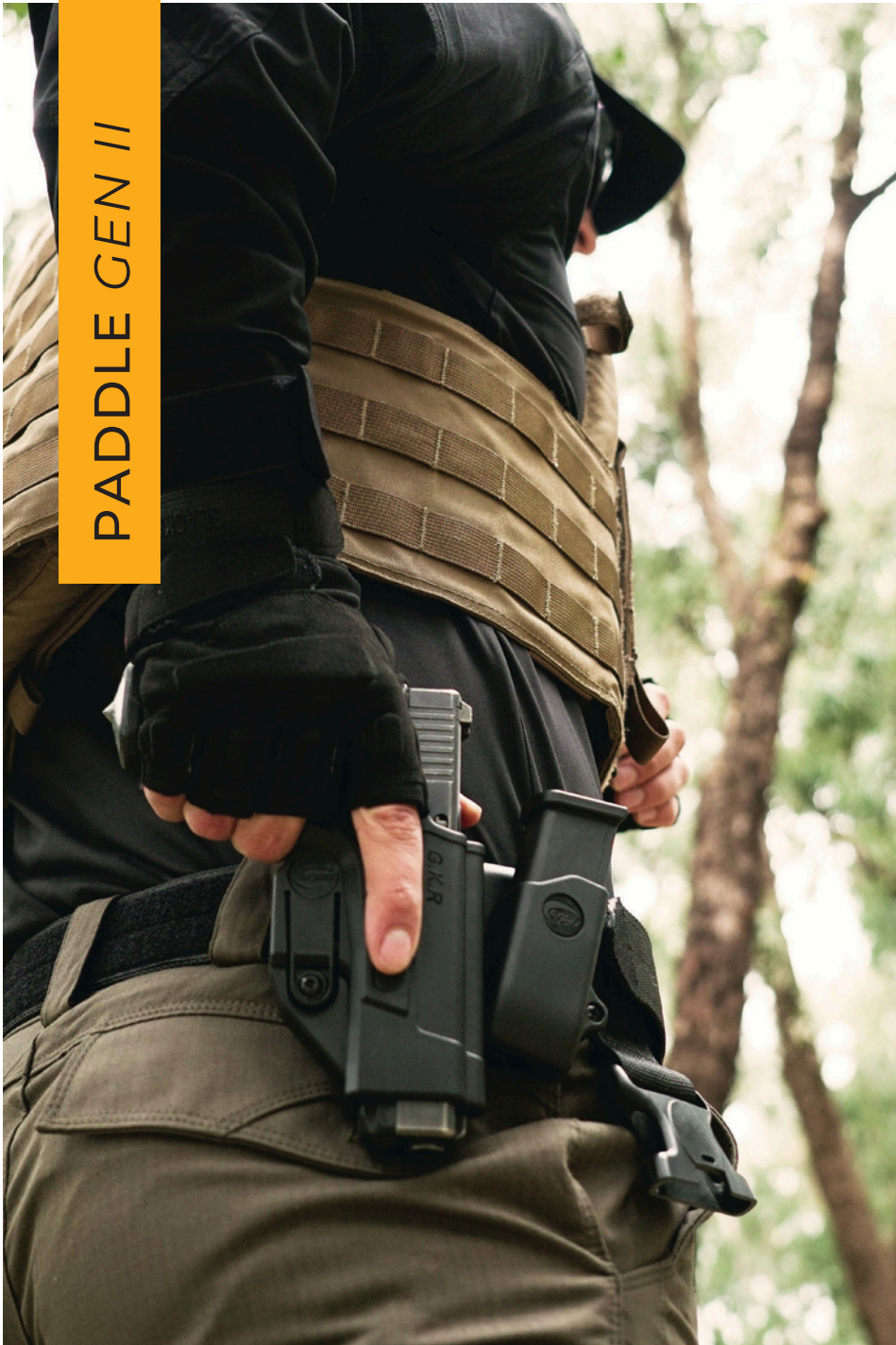


MANUFACTURER

FITS

Glock	17, 19, 21, 22, 23,30,30s, 31, 34,36,37,40,45
Sig Sauer	P320 - All Calibers

PADDLE GEN II



Paddle Combo

The Paddle Gen II attachment holds any two Orpaz accessories in whichever order you choose, so you can respond to a threat quickly, comfortably, and effectively. Keep your cuffs, extra magazine, or holster fixed on the Paddle Gen II so you can slide it on and off your belt without ever having to undo it.



Versatile Dual-Slot Design Features a combination mounting system, allowing you to securely attach two Orpaz holsters or accessories on a single platform for enhanced carry options.

Ergonomic Comfort

Contoured to match your body's natural shape, the Paddle Gen II provides a snug fit against your hip, ensuring all-day comfort for tactical or everyday use.

Easy On/Off Installation

Designed for quick and hassle-free wear, the paddle securely grips your belt or pants, offering smooth attachment and removal without compromising stability.

Secure and Stable Hold

The reinforced paddle ensures a firm hold, keeping your gear in place during movement, while maintaining the flexibility needed for a rapid draw.

Compatible with All Orpaz Holsters

Seamlessly integrates with all Orpaz holsters, magazine holders, and other accessories, offering customizable setups for any mission or carry style.

Durable Polymer Build

Made from rugged, high-quality polymer, the Paddle Gen II is impact-resistant and built to withstand demanding tactical conditions.

TASER HOLSTER

Compatible with TASER X26P

Law Enforcement Tactical

The new Orpaz Taser Holster is all you've ever needed to safely and effectively carry your taser on duty. Fully compatible with the Axon TASER X26P, this holster offers unparalleled safety and reliability features. When holstered, the taser is covered by a hood, keeping your taser safe and secure while in action and cutting short any attempt to steal it. The thumb activated level 2 retention will allow you to pop back the hood quickly and easily draw your taser. In case of reholstering with safety off, the holster will automatically slide the safety switch back to safety. The bottom of the holster is covered to protect the taser but has a small drainage hole in case you're operating on a rainy day, Made in Israel and constructed from a rigid, lightweight polymer.

MANUFACTURER	FITS	.SKU
Axon	TASER X26P	TSRX26P



Used by Israel Police





All ORPAZ items are available at
israeldefensestore.com

